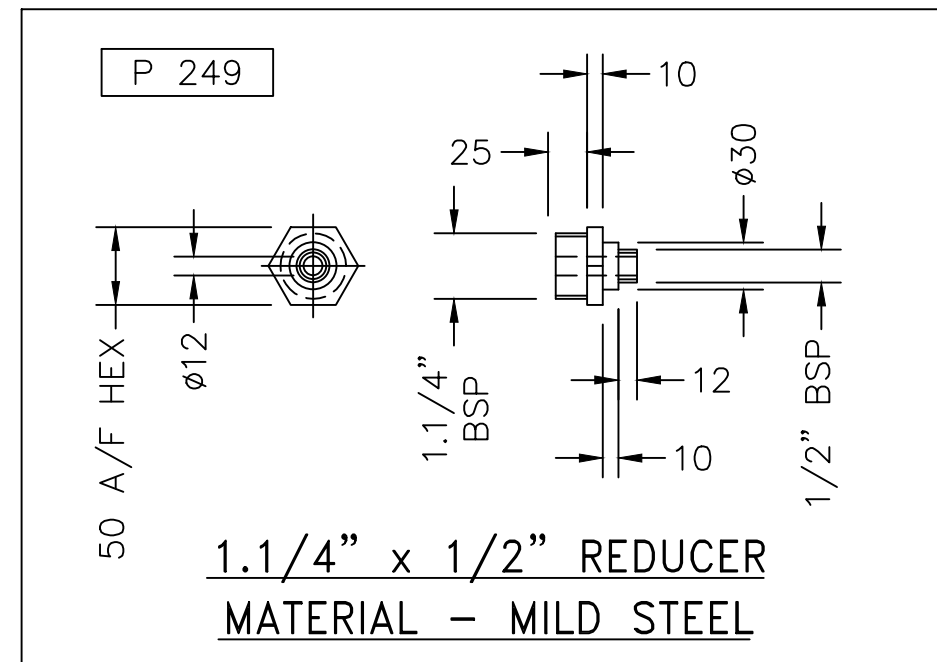
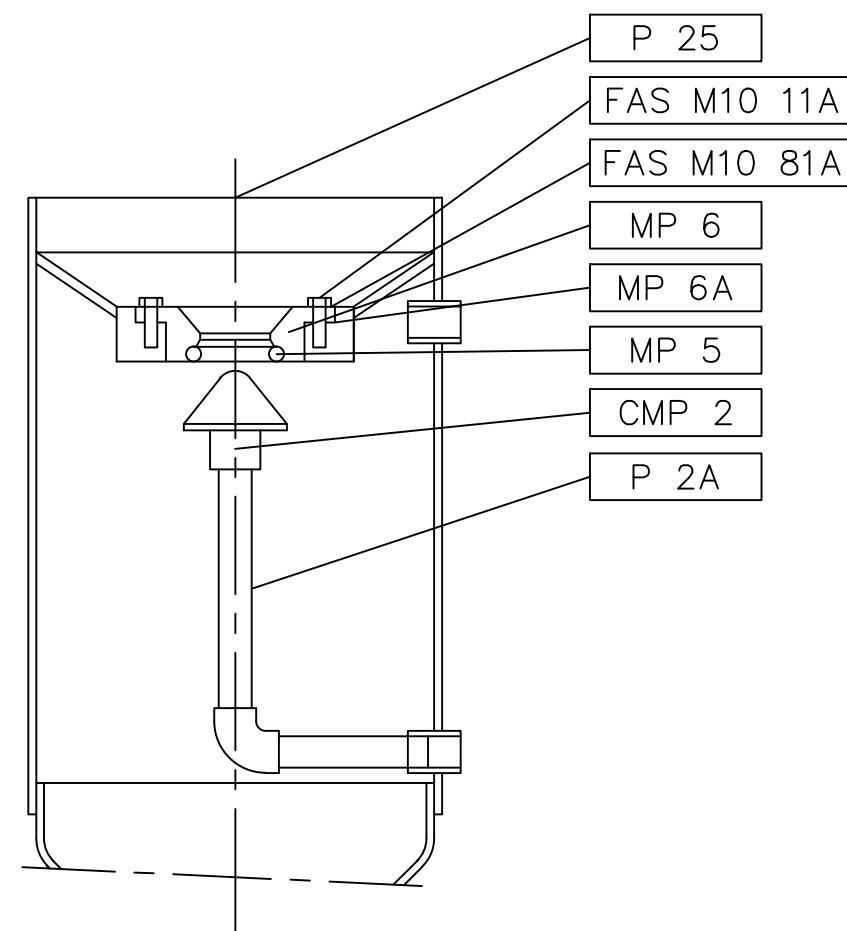
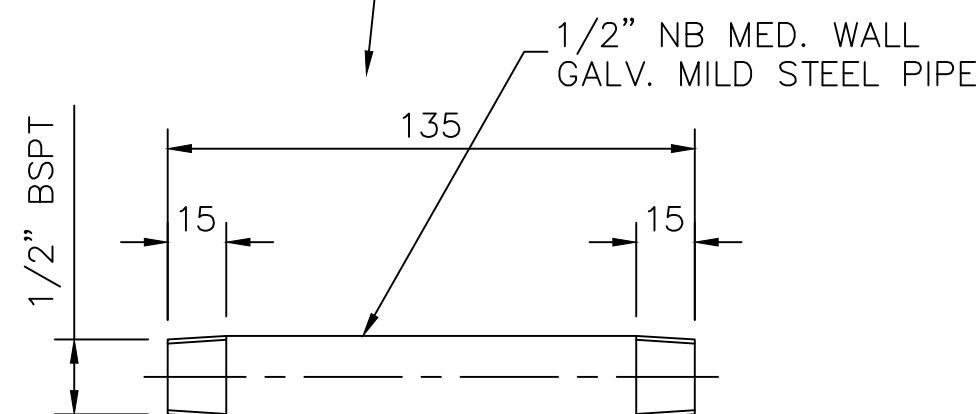


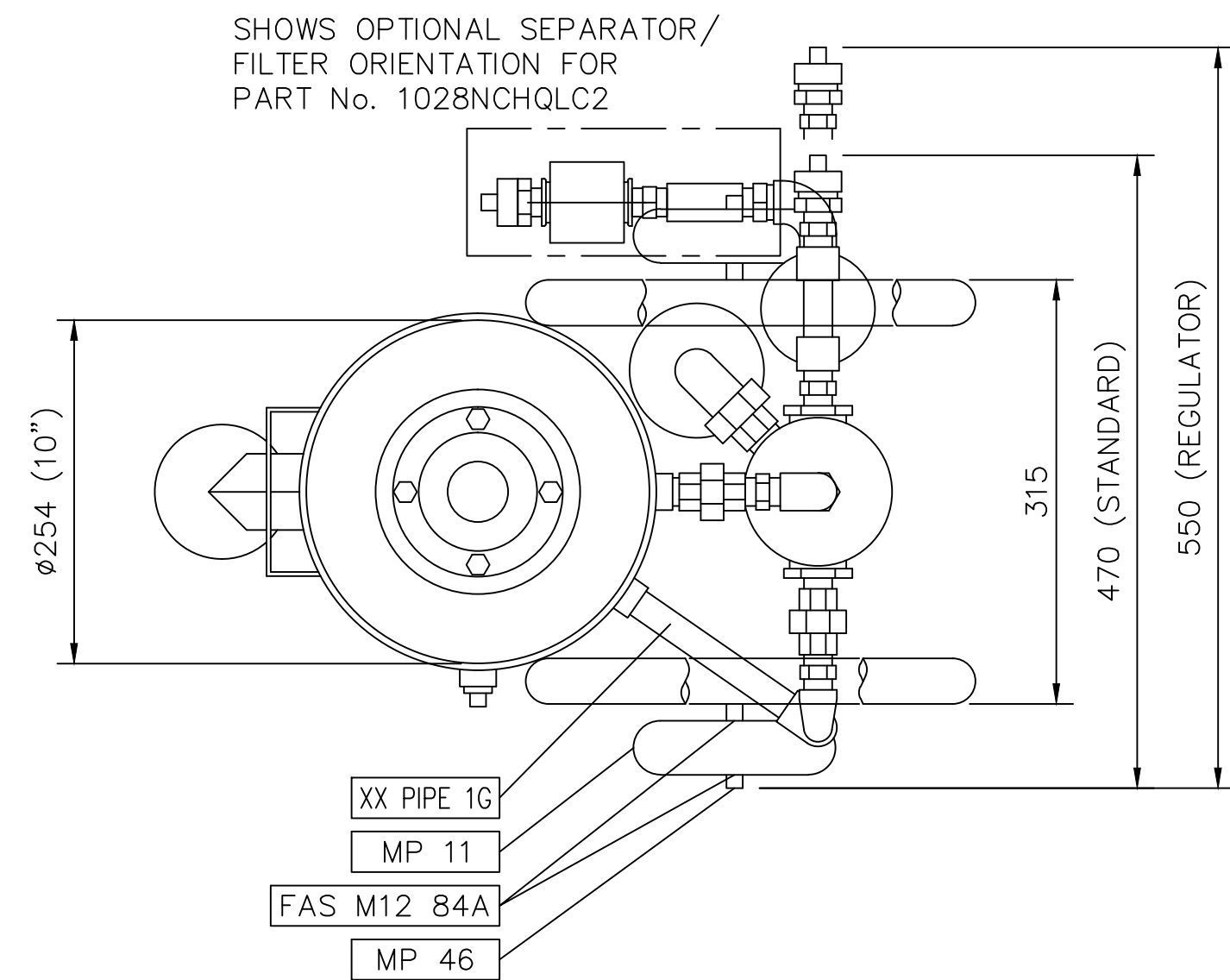
PART SECTION ON CENTRE LINE



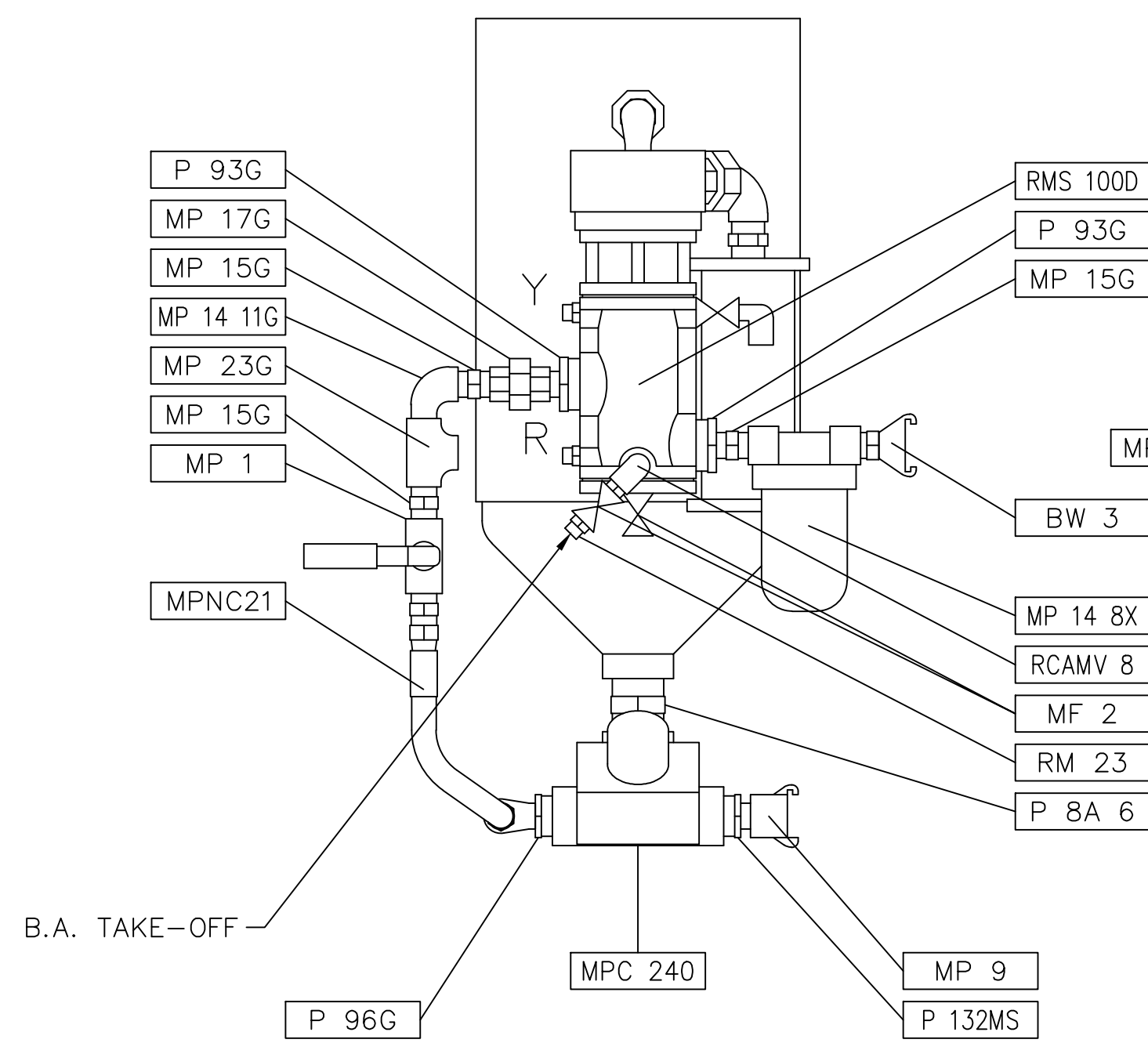
1.1/4" x 1/2" REDUCER  
MATERIAL - MILD STEEL



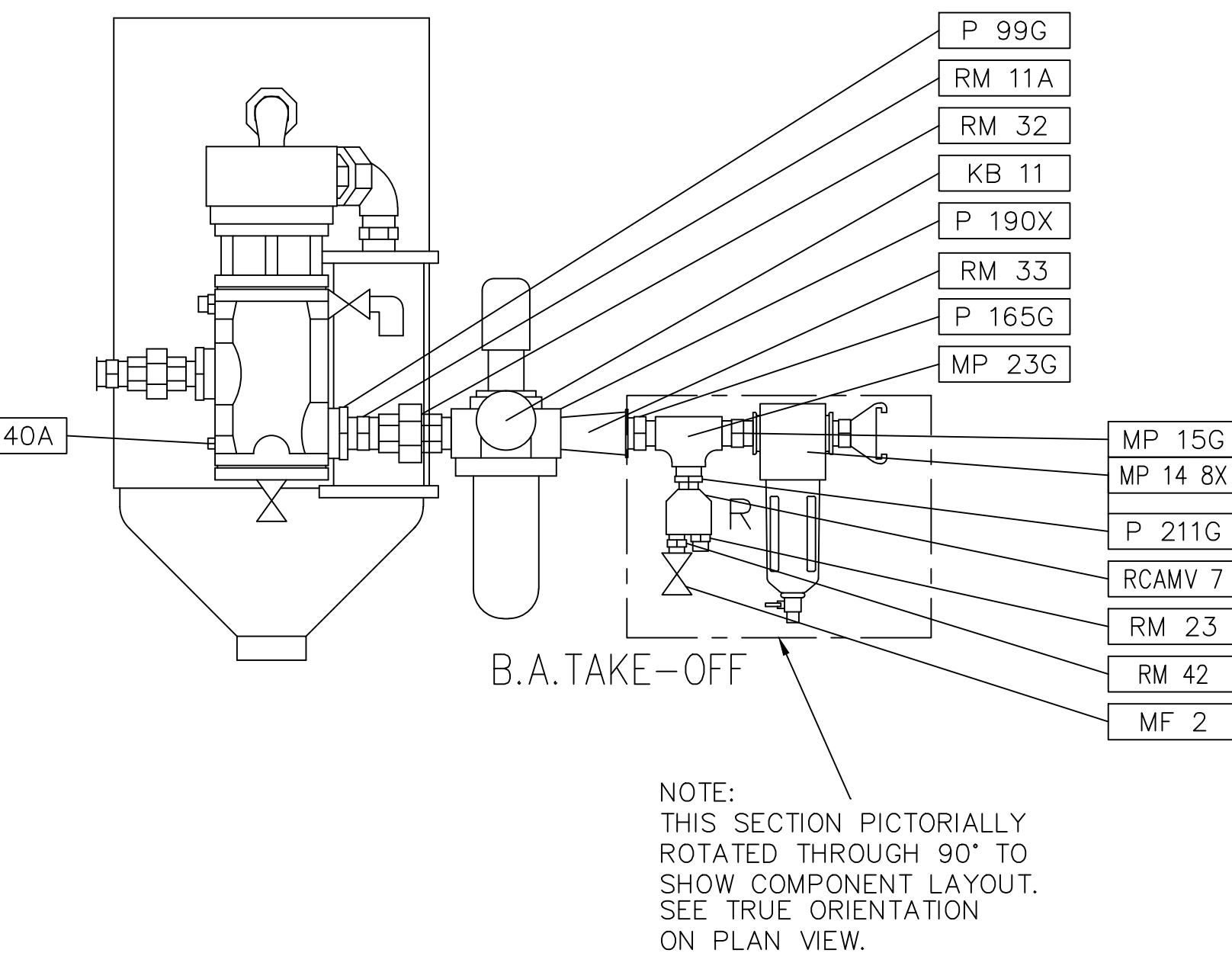
PIPE THREADING DETAIL



PLAN VIEW (SHOWS TRUE ORIENTATION)



STANDARD PIPING VIEW ON "A"  
PART No - 1028NC HQLC1



PIPING W/OPTIONAL REGULATOR VIEW ON "A"  
PART No - 1028NC HQLC2

NOTE:  
THIS SECTION PICTORIALLY  
ROTATED THROUGH 90° TO  
SHOW COMPONENT LAYOUT.  
SEE TRUE ORIENTATION  
ON PLAN VIEW.

6	7	8	8	
PLATE 3	WARNING NAMEPLATE	PROD. CODE	DESCRIPTION	QTY
PLATE 6	VESSEL I/D NAMEPLATE	1028NC SH	SHELL CONTRACTOR STYLE	
RCAMV 4	BULKHEAD ADAPTOR 1/4" C/W NUT	CMP 2	POP UP VALVE ASSY	
RCAMV 7	TWINBLOCK 1/4"	FAS M10 11A	SCREW - HEX HEAD x 25 LG BZP	
RCAMV 8	ELBOW 1/4" BR M/F	FAS M10 81A	WASHER - SPRING BZP	
RIVET 1	HAMMER DRIVE RIVET	FAS M12 84A	WASHER - LARGE SERIES BZP	
RM 11A	NIPPLE 3/4" M/I GALV	KB 11	GAUGE 0-160psi 1/8" BACK PORT	
RM 23	ADAPTOR 1/4"x1/4"	LABEL 1	RED WARNING LABELS	
RM 33	ELBOW 3/4" M/F - M/I GALV.	LABEL 2	SMALL TRANSFER	
RMS 100D	RECOVA VALVE C/W SILENCER ASSY	LABEL 7	TRIANGULAR ADHESIVE LABEL	
XX PIPE 1G	PIPE - 1/2" NB x M.W. GALV M.S	MF 2	TAP - 1/4" M & F PLATED	
		MP 1	VALVE 1/2" BALL VALVE	
		MP 11	WHEEL 6" DIA	
		MP 14 11G	ELBOW M&F 1/2" M.I. GALV	
		MP 14 8X	WATER SEP/AIR FILTER 1/2"	
		MP 15G	NIPPLE 1/2" M.I. GALV	
		MP 17G	UNION 1/2" M&F M.I. GALV	
		MP 20G	ELBOW 1/2" F M.I. GALV	
		MP 23G	TEE 1/2" F M.I. GALV	
		MP 32G	PLUG 1/2" M.I. GALV.	
		MP 40A	PLUG 1/4" (PLATED)	
		MP 46	SPLIT PIN 3MM DIA X 25MM LONG	
		MP 8 SG	STEEL GRIT VALVE 1/2"	
		MP 5	SEALING RING	
		MP 6	INSPECTION PLATE COVER	
		MP 6A	INSPECTION PLATE COVER GASKET	
		MP 9	QUICK COUPLING 1/2"	
		MPC 240	ABRASIVE METERING VALVE 1" F.	
		MPNC21	SWAGED HOSE ASS'Y FOR 1028	
		MSGV 1	LOWER FLANGE & TEE	
		MSGV 2	FLANGE-UPPER	
		P 132MS	NIPPLE 1" x 1/2" F.S. x 3000#	
		P 165G	NIPPLE 3/4" x 1/2" M.I. GALV.	
		P 190X	PRESSURE REGULATOR/FILTER 3/4"	
		P 2A	POP-UP GUIDE	
		P 211G	BUSH 1/2" x 1/4" M.I. GALV	
		P 249	NIPPLE 1.1/4" x 1/2" SPECIAL	
		P 25	SAFETY EDGING TRIM	
		P 8A 6	NIPPLE 1.1/4" F/S	
		P 93G	BUSH 1.1/4" x 1/2" M/I GALV	
		P 96G	BUSH 1" x 1/2" M/I GALV,	
		P 99G	BUSH 1.1/4" x 3/4" M.I. GALV.	

PIPING W/REGULATOR & STEEL GRIT VALVE VIEW ON "A"  
PART No - 1028NC HQLCSGV

5	4600	A.M.	09.12.2008	
4	4589	A.M.	29.10.2008	
3	3637	M.LEE	20.7.01	
2	3582	M.LEE	1.5.01	
1	ORIGINAL	M.LEE	25.10.00	
ISSUE No	MOD. No	DRAWN	CHECKED	DATE

GENERAL NOTES

- 1) MATERIAL: COLD ROLLED MILD STEEL SHEET TO BS 1449 GRADE CR4 OR EQUIVALENT; HOT ROLLED MILD STEEL SECTIONS TO BS 4360 GRADE 43A OR EQUIVALENT. FINISH: SELF-COLOUR FOR PAINTING.
- 2) REMOVE ALL SHARP EDGES AND BURRS.
- 3) JOINTS AND CONSTRUCTION TO SUIT MANUFACTURERS' STANDARD PROCESSES.
- 4) DIMENSIONS AND TOLERANCES TO BS 308.
- 5) MACHINED SURFACES UNLESS STATED.
- 6) THREADS TO BS 3643 6H/6g OR BS 21 UNLESS STATED.
- 7) \*
- 8) \*
- 9) \*

WELDING

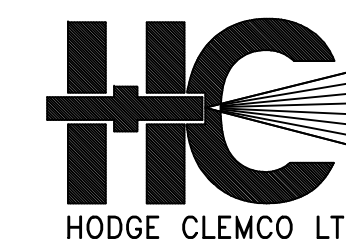
WELDING GENERALLY TO BS 5135 CAT. C & BS 4872 PT. 1 ALL JOINTS & CONNECTIONS OF R.S. SECTIONS CONTINUOUS PLATE TO R.S. SECTION INTERMITTENT 75 WELD 100 GAP  
PLATE THICKNESS 1.6;2.5;3;5;6;8;10;12 | PLATE OVER 12  
WELD SIZE 3 | 6 | 10 | AS SPECIFIED

TOLERANCES

	FABRICATION	MACHINING
HOLE CENTRES	±1mm	±0.25mm
DIAMETER	±3mm	±0.25mm
ANGULAR	±1'	±0.5'
LINEAR	±3mm	±0.5mm

COPYRIGHT

THIS DOCUMENT IS THE PRIVATE & CONFIDENTIAL PROPERTY OF HODGE CLEMCO LIMITED & MUST NOT BE REPRODUCED OR DISCLOSED TO ANY THIRD PARTY WITHOUT PRIOR WRITTEN CONSENT OF THE AFOREMENTIONED COMPANY.



HODGE CLEMCO LIMITED,  
ORGREAVE DRIVE,  
SHEFFIELD,  
S13 9NR.  
TEL. 0114 2540600  
FAX. 0114 2540250

DO NOT SCALE - IF IN DOUBT ASK

TITLE 1028NC ASSEMBLY DETAILS

CUSTOMER STOCK

7	4847	A.M.	14.02.2012	
6	4791	A.M.	25.08.2011	
ISSUE No	MOD. No	DRAWN	CHECKED	DATE

DRAWN	DATE	DIMENSION	SCALE
ML	25.10.00	MM	1:5
DRAWING No			SIZE
HC-7079			A1